

Centrifugal Pump  
ISO 2858



## Application

The Xcelflo ISO centrifugal pump is suitable for handling water and similar liquids mainly used in the following applications.

- Water
- Industry
- Mining
- Environmental
- Building Services

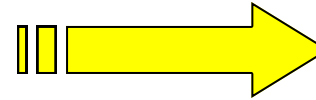
## Design

Horizontal, single stage, end suction centrifugal pump dimensionally built to ISO 2858 . The back pull out design allows for easy maintenance and repair as the rotating element may be removed without disturbing the pipe work.

## Operating Data - 50 Hz

Pump sizes	up to	32mm to 200mm
Flow	up to	250 L/s
Head	up to	160m
Temperature	up to	120°C
Speed	up to	2950 or 3000rpm
Pressure	up to	16 bar

# Heavy Duty Industrial Centrifugal Pump



**ISO 2858 STANDARD** - ensures dimensional interchangeability with pumps conforming to this international standard

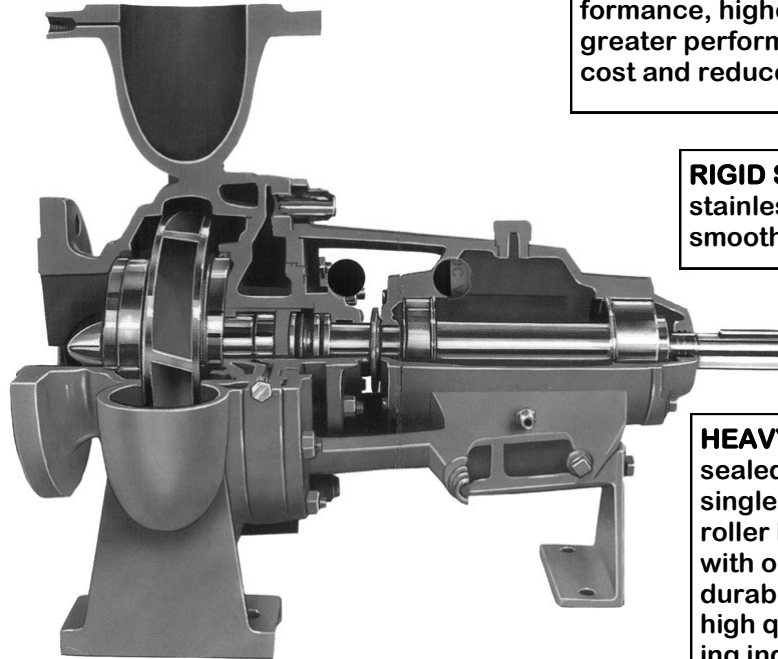
**CASING** - casings are foot mounted, single stage, end suction type. All pump casings are radially split to permit removal of the rotating assembly without disturbing the pump casing, suction and discharge piping, driver and coupling alignment. The vertical centre line discharge makes the casing self venting. The back cover is held to the casing with studs to facilitate rapid removal of rotating assembly. The pressure joint is sealed with a fully confined gasket

**WET END MATERIAL OPTIONS** - Cast Iron, Ductile Iron, Bronze, SS304, SS316 etc.

**TAPER MOUNTED IMPELLER** - impeller is taper mounted and keyed to shaft for positive drive and easy removal

**PAINTING** - prior to painting, the pump is thoroughly cleaned of foreign material. The pump is then painted with a high quality / undercoat / primer and industrial enamel paint.

**STANDARD TAPPINGS** - volute drain plug, suction and discharge flange tapping for pressure gauge



**DESIGN EXCELLENCE** - superior hydraulic design and manufacturing processes together with double curvature impeller blades provide highly efficient suction performance, higher speed capabilities and greater performance for reduced running cost and reduced maintenance

**RIGID SHAFT** - heavy duty design type stainless steel shaft for minimal deflection, smoother running and longer bearing life

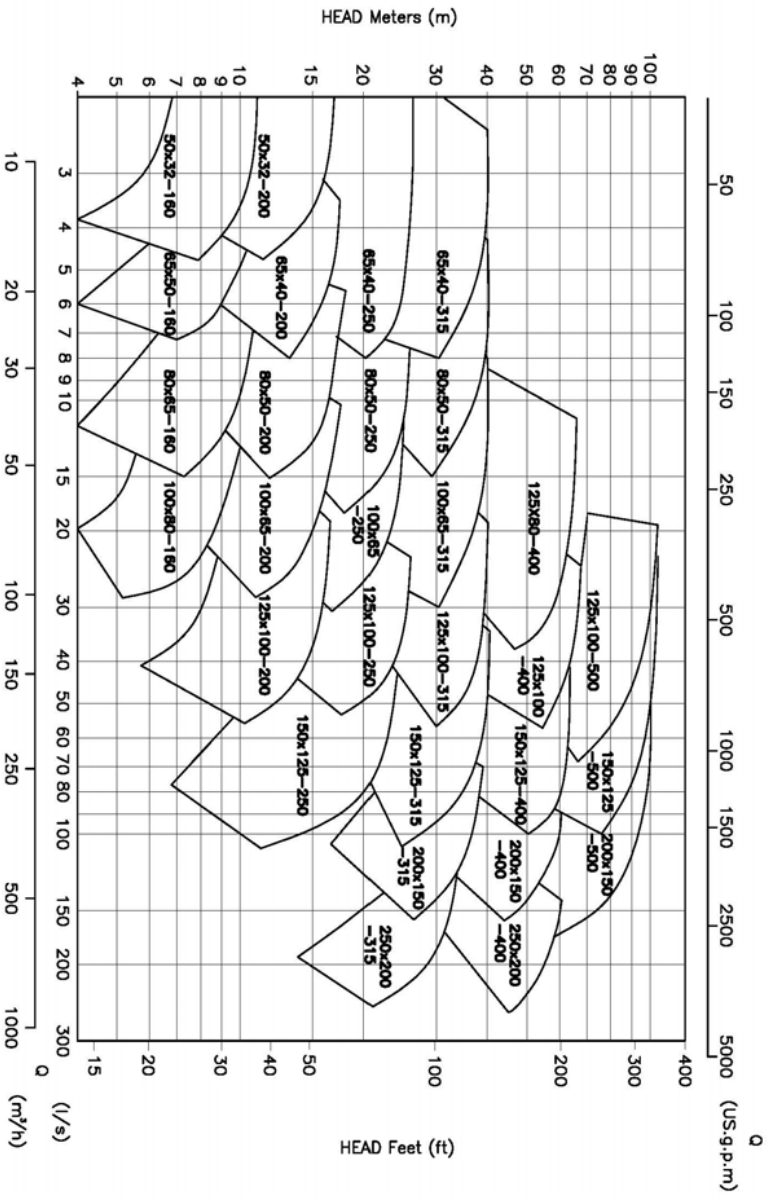
**1600KPA Pressure Rating**

**HEAVY DUTY BEARINGS** - heavy duty sealed for life grease packed ball bearing, single & double row as standard. Taper roller bearings running in oil filled housing with oil mister also available for added durability. The bearings are protected by high quality manufactured lip seal reducing ingress of moisture & foreign matter

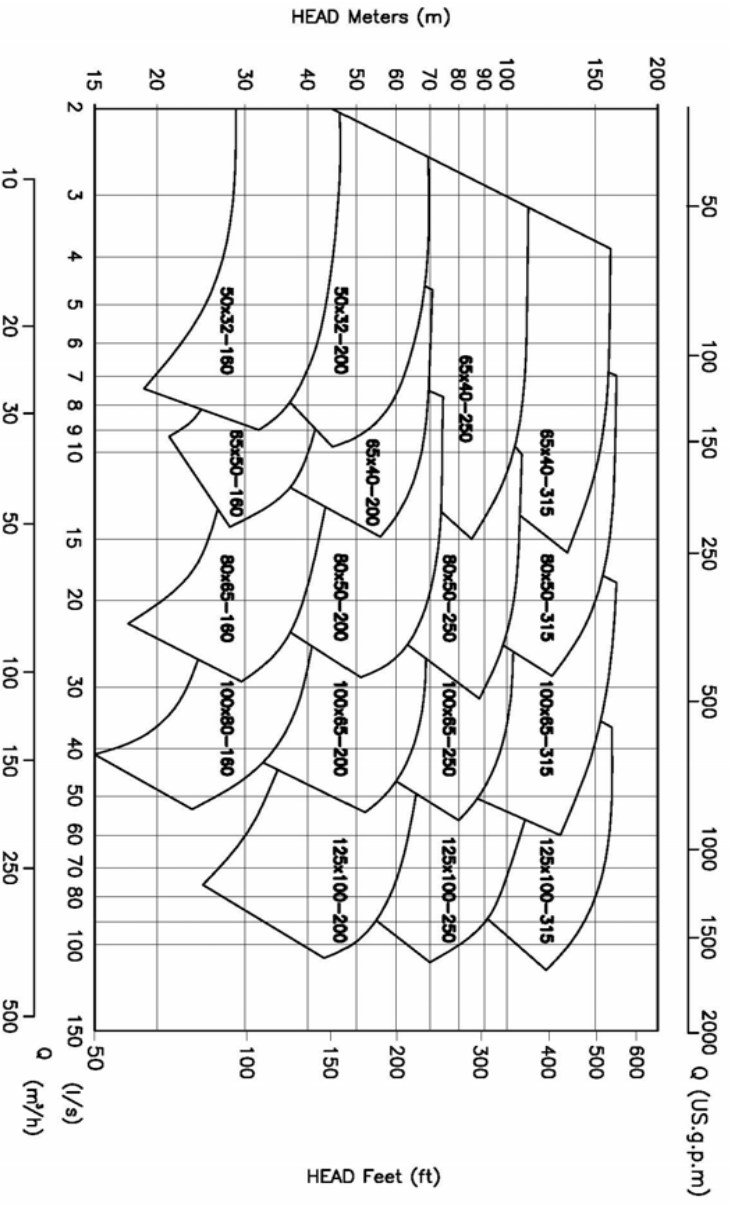
**SHAFT SEAL** - single, high quality mechanical seal fitted as standard to all pumps. Special seals arrangement are possible on particular application such as double mechanical seals, external cooling and flushing etc.

**BEARING HOUSING**  
Robust / heavy duty, manufactured in high strength cast iron providing trouble-free life complete with lifting provision and support foot.

**Selection Chart  
1450 rpm**

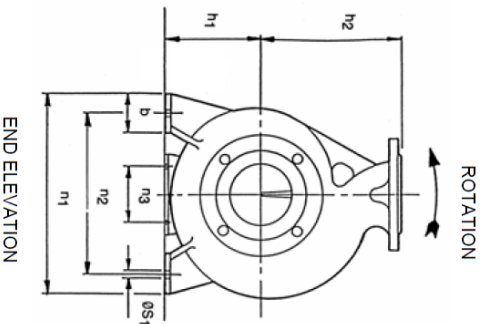


**Selection Chart  
2900 rpm**

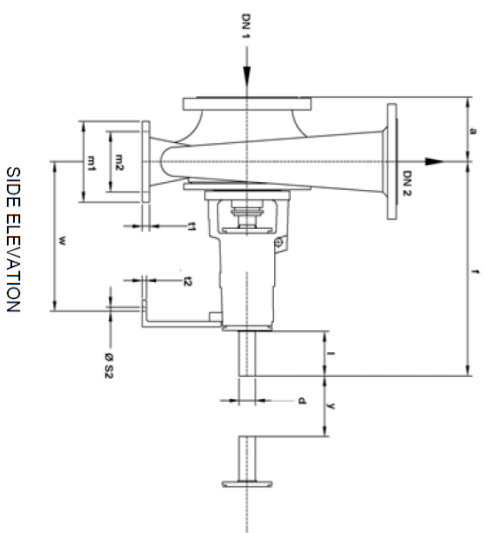


**Note: For final selection refer to individual performance curves**

# Dimensions



**FLANGES DRILLED**  
EN 1092 / 16 bar



PUMP MODEL	Nom. Imp Dia. (mm)	FLANGE		PUMP	FOOT			BOLT HOLES	SPACER	SHAFT END	Shaft No.	NET WEIGHT kg											
		DN 1	DN 2		a	f	h <sub>1</sub>						h <sub>2</sub>	b	m <sub>1</sub>	m <sub>2</sub>	n <sub>1</sub>	n <sub>2</sub>	n <sub>3</sub>	w	t <sub>1</sub>	t <sub>2</sub>	s <sub>1</sub>
50x32-180	160	50	32	80	385	132	160	50	100	70	240	180	110	285	12	6	M12	M12	100	24	50	1	38
50x32-200	200	50	32	80	385	180	180	50	100	70	240	180	110	285	12	6	M12	M12	100	24	50	1	46
65x40-160	160	65	50	80	385	132	160	50	100	70	240	180	110	285	12	6	M12	M12	100	24	50	1	40
65x40-200	200	65	50	100	385	180	180	50	100	70	265	212	110	285	13	6	M12	M12	100	24	50	1	48
65x40-250	250	65	50	100	500	180	225	65	125	95	320	250	110	370	14	6	M12	M12	100	32	80	2	70
65x40-315	315	65	40	125	500	200	250	65	125	95	345	280	110	370	16	6	M12	M12	100	32	80	2	80
80x65-160	160	80	65	100	385	160	180	50	100	70	265	212	110	285	13	6	M12	M12	100	24	50	1	48
80x65-200	200	80	65	100	385	180	200	50	100	70	265	212	110	285	13	6	M12	M12	100	24	50	1	52
80x65-250	250	80	65	125	500	180	225	65	125	95	320	250	110	370	15	6	M12	M12	100	32	80	2	72
80x65-315	315	80	65	125	500	225	280	65	125	95	345	280	110	370	18	6	M12	M12	100	32	80	2	87
100x80-160	160	100	80	100	500	160	200	65	125	95	280	212	110	370	14	6	M12	M12	100	32	80	2	68
100x85-200	200	100	65	100	500	180	225	65	125	95	320	250	110	370	14	6	M12	M12	140	32	80	2	70
100x85-250	250	100	65	125	500	200	250	80	160	120	360	280	110	370	16	6	M16	M12	140	32	80	2	80
100x85-315	315	100	65	125	530	225	280	80	160	120	400	315	110	370	18	6	M16	M12	140	42	110	3	118
125x80-400	400	125	80	125	530	280	355	80	160	120	435	355	110	370	20	6	M16	M12	140	42	110	3	165
125x100-200	200	125	100	125	500	200	280	80	160	120	360	280	110	370	17	6	M16	M12	140	32	80	2	85
125x100-250	250	125	100	140	530	225	280	80	160	120	400	315	110	370	18	6	M16	M12	140	42	110	3	128
125x100-315	315	125	100	140	530	250	315	80	160	120	400	315	110	370	19	6	M16	M12	140	42	110	3	135
125x100-400	400	125	100	140	530	280	355	100	200	150	500	400	110	370	20	6	M20	M12	140	42	110	3	175
125x100-500	500	125	100	160	670	355	450	100	200	150	550	450	110	500	25	10	M20	M16	180	48	110	4	313
150x125-250	250	150	125	140	530	250	355	80	160	120	400	315	110	370	19	6	M16	M12	140	42	110	3	140
150x125-315	315	150	125	140	530	280	355	100	200	150	500	400	110	370	21	6	M20	M12	140	42	110	3	150
150x125-400	400	150	125	140	530	315	450	100	200	150	500	400	110	370	20	6	M20	M12	140	42	110	3	186
150x125-500	500	150	125	160	670	355	450	100	200	150	550	450	140	500	25	10	M20	M16	180	48	110	4	338
200x150-315	315	200	150	160	670	315	400	100	200	150	550	450	140	500	25	10	M20	M16	180	48	110	4	222
200x150-400	400	200	150	160	670	315	450	100	200	150	550	450	140	500	25	10	M20	M16	180	48	110	4	300
200x150-500	500	200	150	180	670	400	500	100	200	150	550	450	140	500	25	10	M20	M16	180	48	110	4	382
250x200-315	315	250	200	180	670	315	450	100	200	150	550	450	140	500	25	10	M20	M16	180	48	110	4	277
250x200-400	400	250	200	180	670	315	500	100	200	150	550	450	140	500	25	10	M20	M16	180	48	110	4	340

Dimensions shown in mm

## Shaft Dimensions

Shaft No.	DIAMETER TOLERANCE D	KEY WIDTH F	KEY HEIGHT G	KEYWAY DEPTH TOLERANCE H	KEY LENGTH K
No. 1	24mm +0.015/-0.002	8	7	20mm +0/-0.2	32
No. 2	32mm +0.018/-0.002	10	8	27mm +0/-0.2	50
No. 3	42mm +0.018/-0.002	12	8	37mm +0/-0.2	60
No. 4	48mm +0.018/-0.002	14	9	42.5mm +0/-0.2	80

