

## *Xcel-prime H-Series*



The Xcelflo Xcel-prime self-priming centrifugal H Series is the standard for industrial and sewage applications. The heavy duty construction and easy-to-service design have made Xcel-prime H Series pumps the standard in the industry. The combination of different sized pumps, impeller trims and speed variations ensure that the correct capacity pump will be matched to the exact requirements of your system, whether it's a small sub-division or a large waste collection system. These pumps feature a large volute design that allows them to re-prime automatically in a completely open system without the need for suction or discharge check valves - and they can do it with the pump casing only partially filled with liquid and a completely dry suction line.

### **FEATURES**

#### **Multi-Vane Solids Handling Impeller**

---



Multi-vane, open impeller is designed for high efficiency. Costructed of ductile iron, the impeller will handle up to 3" (76 mm) diameter solids.

#### **Cartridge Seal**

---



Exclusive double-floating, self-aligning oil lubricated mechanical cartridge seal with stationary and rotating face of silicon carbide is specifically designed for rugged & abrasive industrial wastewater service.

#### **Removable Cover Plate**

---



Removable cover plate provides quick and easy access to pump interior without disconnecting piping. Clogs can be removed and pump returned to service in minutes. Impeller, seal, wear plate and flap valve can also be accessed through cover plate opening for inspection or service.

#### **Removable Rotating Assembly**

---



Removal of rotating assembly allows easy inspection of pump shaft or bearings without disturbing pump casing or piping. On most models, simply remove four bolts from the back of the pump and the rotating assembly slides out.

#### **Replaceable Wear Plates**

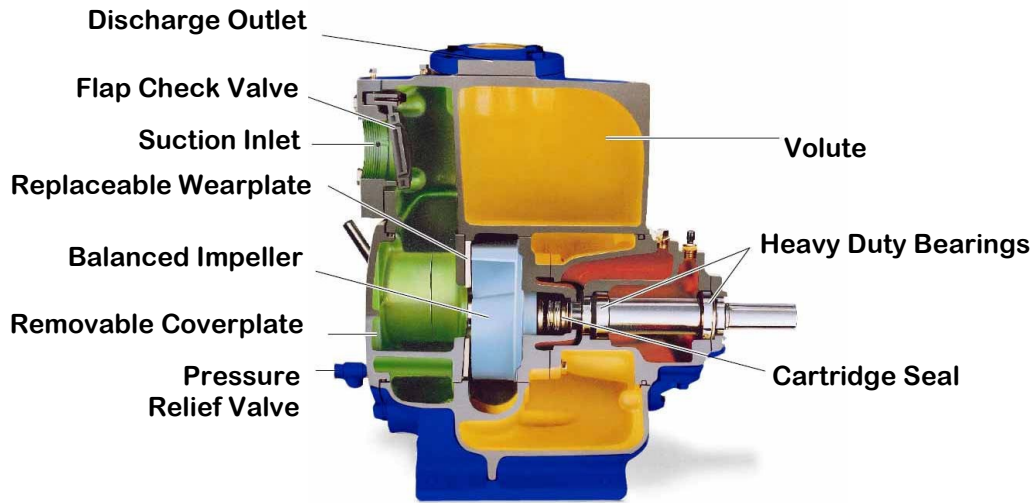
---

H-Series pumps feature replaceable wear plates which fasten to the cover plate and can easily be removed for inspection or service.

#### **Drive Variation**

---

H-Series Pumps are available as basic units for connection to customers' power source or may be flex-coupled or V-belt driven by an electric motor. Pumps may also be powered by gasoline or diesel engines. Electric motor driven pumps with "standby" engine power are also available.

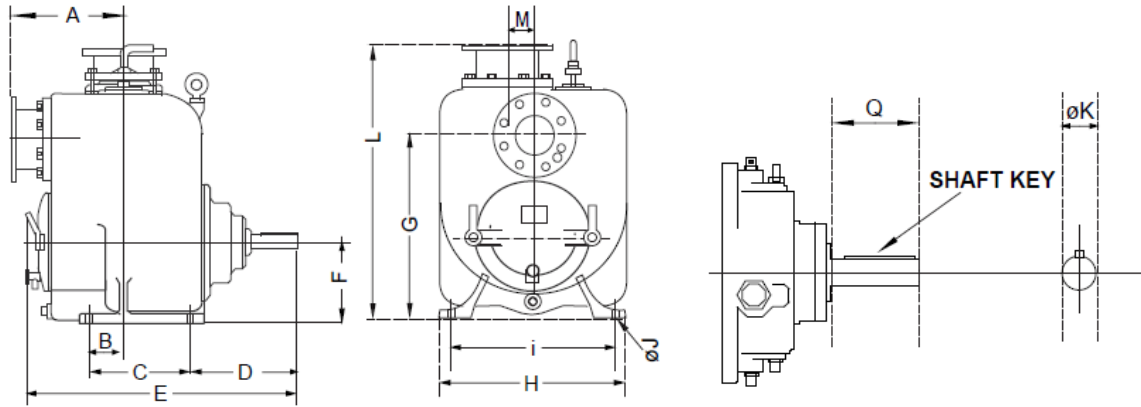


**Cross Section of Pump**

MATERIAL OF CONSTRUCTION		
CASING	IMPELLER	SHAFT
CAST IRON BRONZE SS304 SS316 HARDEN IRON	DUCTILE IRON CARBON STEEL BRONZE CD4MCU SS304 SS316 HARDEN IRON	2Cr13 (420) SS304 SS316

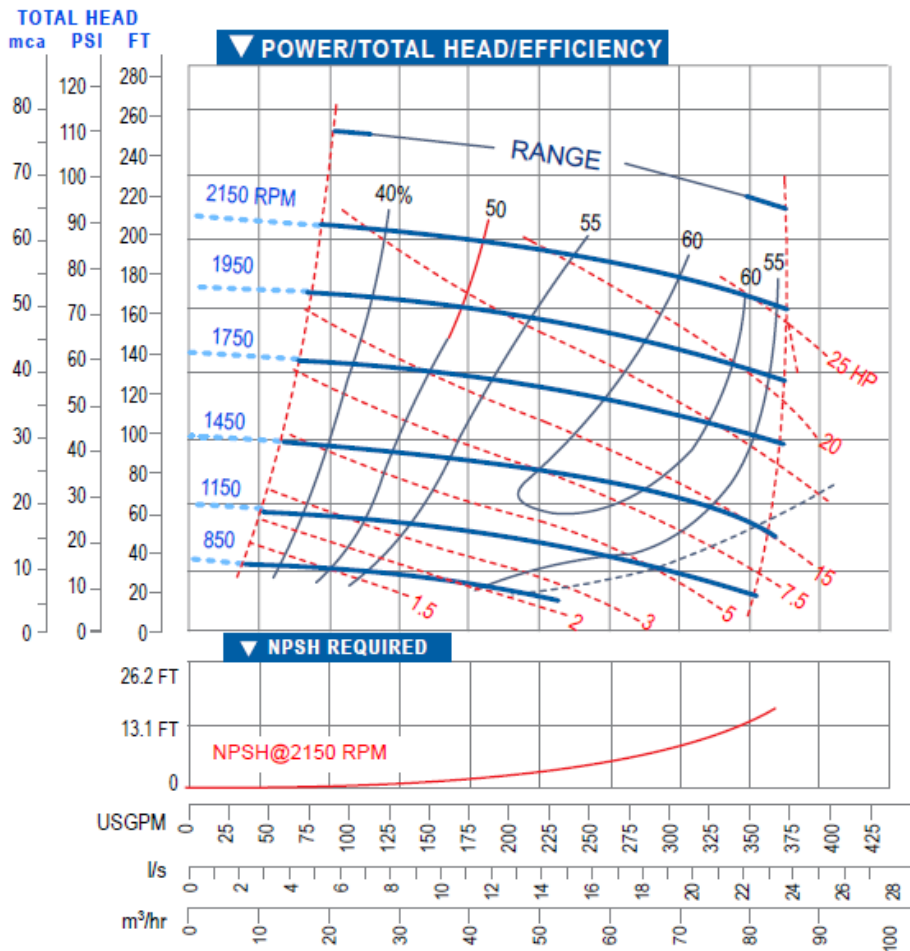
**PERFORMANCE TABLE**

PUMP MODEL	PORT SIZE (INCH)	SOLID SIZE (mm)	CAPACITY (m <sup>3</sup> /h)			HEAD (m)			RPM	MOTOR HP
			85	55	20	49	58	61		
H-3	3"	21	85	55	20	49	58	61	2150	30
H-4	4"	29	145	100	35	53	56	60	2150	50
H-6	6"	32	305	210	98	44	53	58	1950	75
HL-2	2"	44	47	30	14	27	31	35	2900	15
HL-3	3"	64	105	70	31	25	30	35	2150	25
HL-4	4"	76	180	110	55	24	30	35	1950	30
HL-6	6"	76	330	225	85	18	24	32	1550	40
HL-8	8"	76	590	360	140	12	26	33	1550	75
HL-10	10"	76	760	470	220	19	34	43	1450	100
HL-12	12"	76	1250	800	250	19	34	43	2150	125



## Dimensions

Pump Model	Port Size		Pump Dimension						Foot Dimension						Shaft End		Shipping Weight (kg)
	mm	in	A	E	F	G	L	M	B	C	D	H	I	J	K	Q	
H-3	80	3"	292	667	191	432	687	70	76.2	228.6	282.9	431.8	394.0	17.5	38.1	103.1	301
H-4	100	4"	318	752	222	508	749	70	96.8	279.4	297.5	508.0	457.2	17.5	38.1	126.2	357
H-6	150	6"	406	845	257	568	897	70	77.7	279.4	330.7	584.2	527.2	17.5	45.5	114.3	574

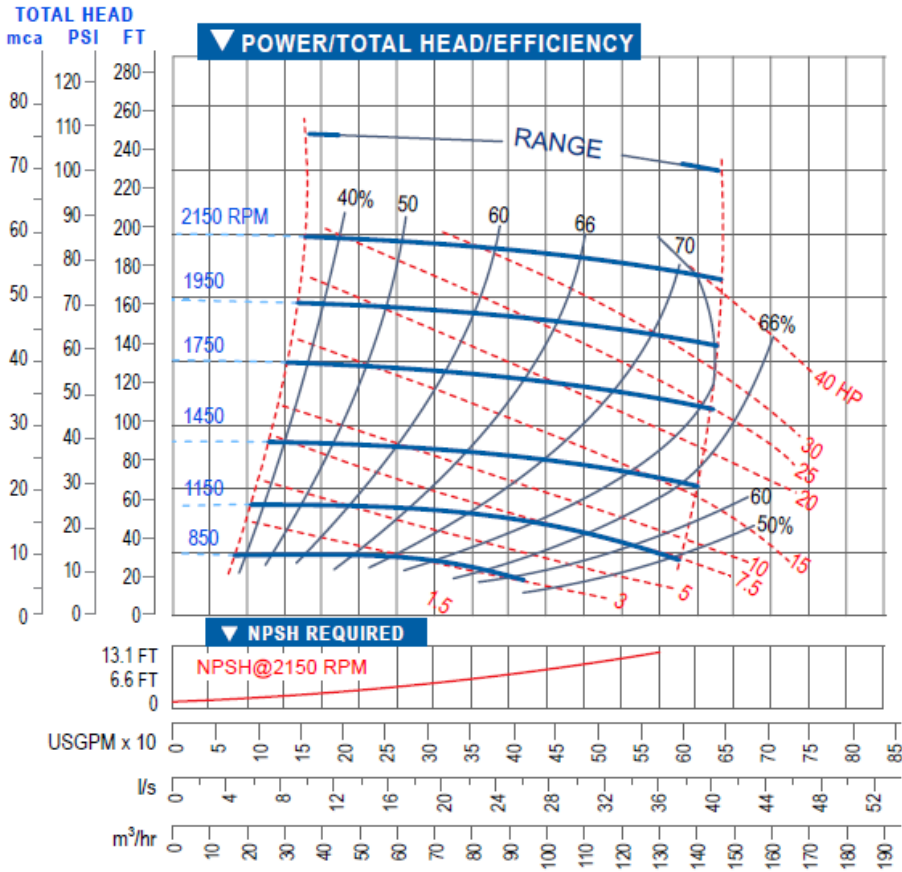


## H-3

**Impeller Dia.**  
279.4mm (11")

**Max. Solids**  
20.63mm (13/16")

**R.P.M**  
850 - 2150

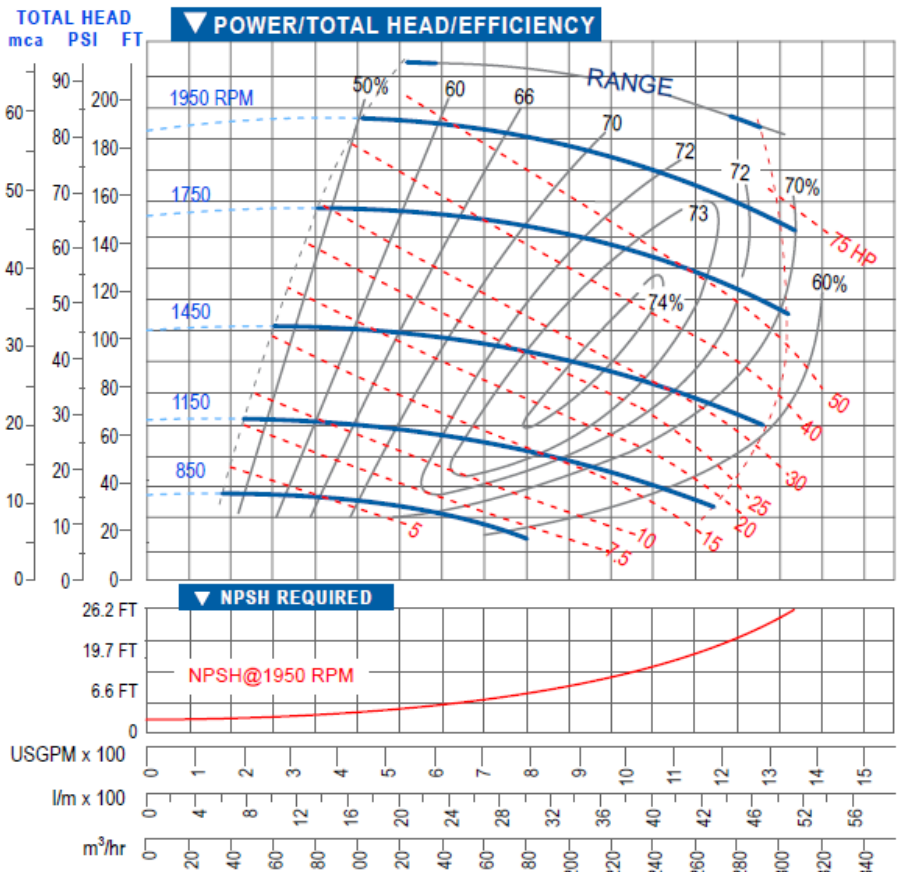


## H-4

Impeller Dia.  
279.4mm (11")

Max. Solids  
28.57mm (1.1/8")

R.P.M  
850 - 2150



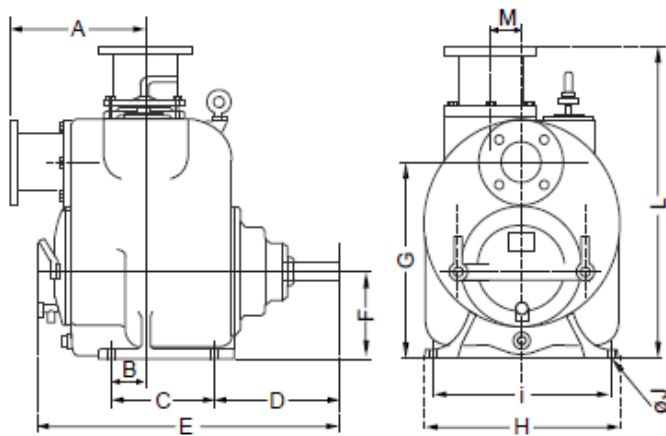
## H-6

Impeller Dia.  
317.5mm (12.1/2")

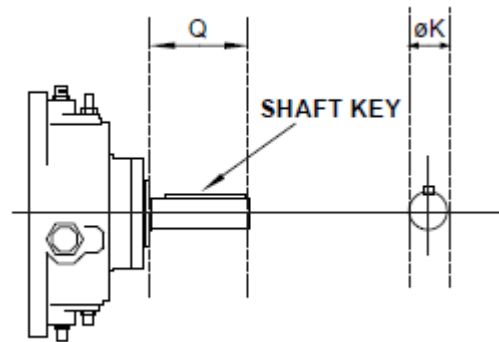
Max. Solids  
31.75mm (1.1/4")

R.P.M  
850 - 1950

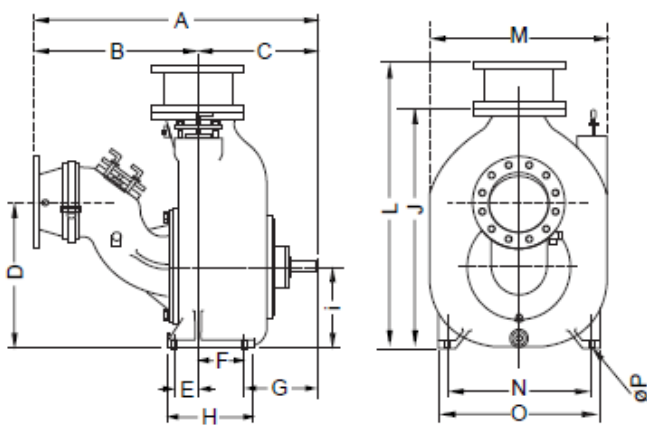
**Models HL-2, HL-3, HL-4, HL-6, and HL-8**



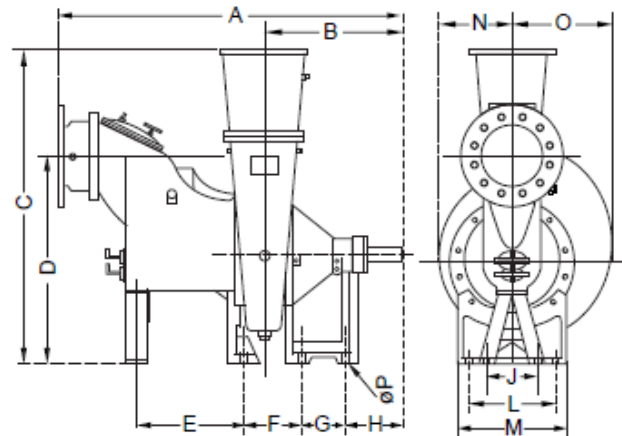
**IMPELLER SHAFT**



**Model HL-10**

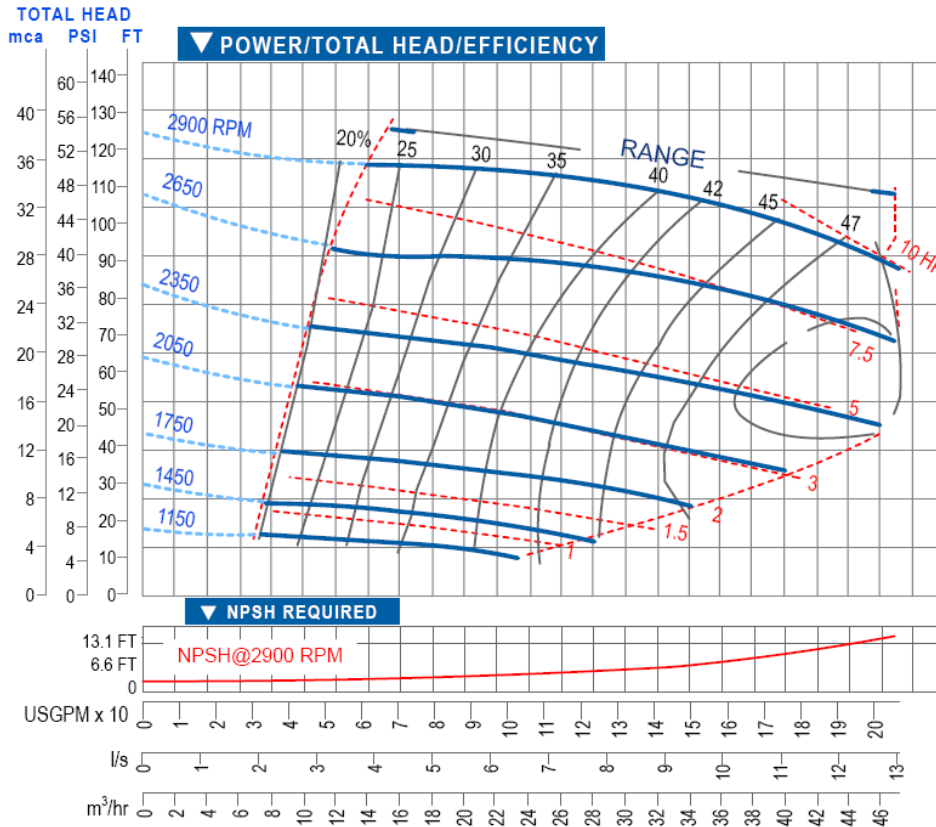


**Model HL-12**



**Dimensions**

Pump Model	Port Size	Pump Dimension								Foot Dimension							Shaft End		Shipping Weight (kg)
		mm	A	E	F	G	L	M	N	O	B	C	D	H	I	J	P	K	
HL-2	50	235	547	152	318	523	70			54	163.2	275	308.3	281	14		38.1	101.6	156
HL-3	80	294	668	191	432	687	70			76.2	228.6	284.2	431.8	393.7	17.5		38.1	101.6	270
HL-4	100	318	768	222	495	743	70			77.8	280	293.7	501.7	457.2	17.5		38.1	127	375
HL-6	150	406	802	257	568	897	70			77.8	279.4	293.7	577.9	527	17.5		38.1	127	487
HL-8	200	413	1023	330	724	1068				101.6	304.8	407.1	704.9	635	22.4		44.5	169.9	905
HL-10	250	1237	102	204	322	1221	786	635	705	712	523.3	636.5	381	355.6	1041.4	22.4	44.5	122.2	943
HL-12	300	1622	508	270	203	406	508	346	467	650	1474.7	917.5	272.5	508	242.8	28.7	69.9	167.4	1100

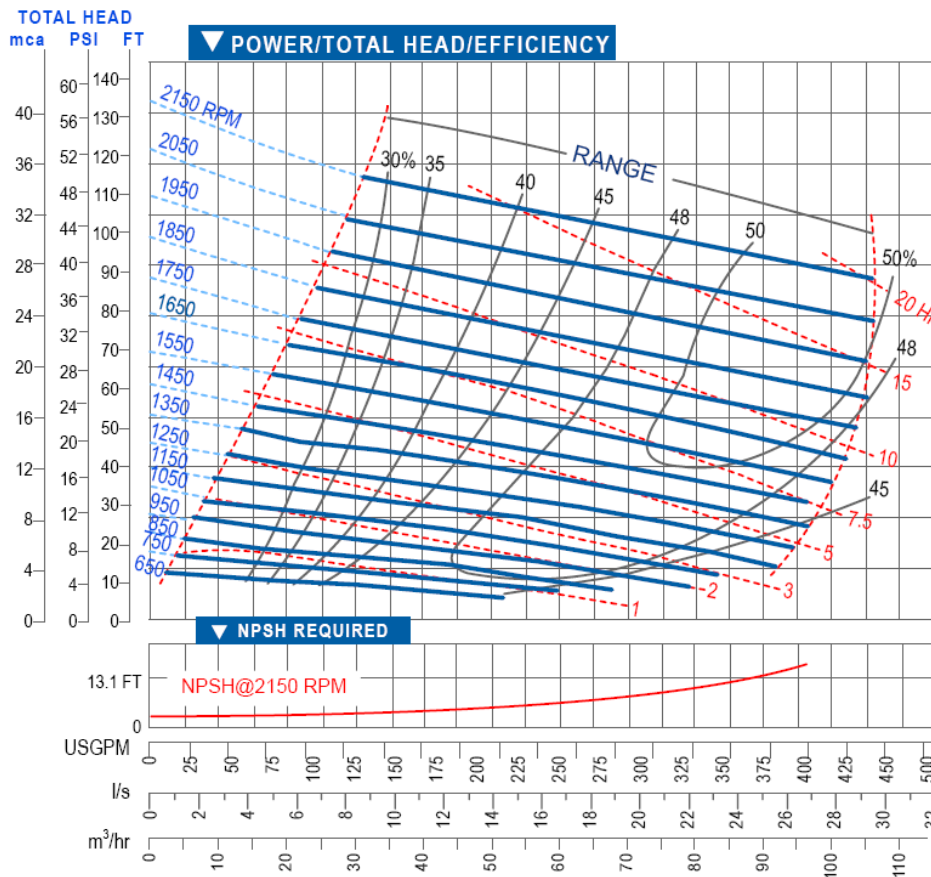


## HL-2

Impeller Dia.  
158.75mm  
(6.1/4")

Max. Solids  
44mm (1.3/4")

R.P.M  
1150 - 2900

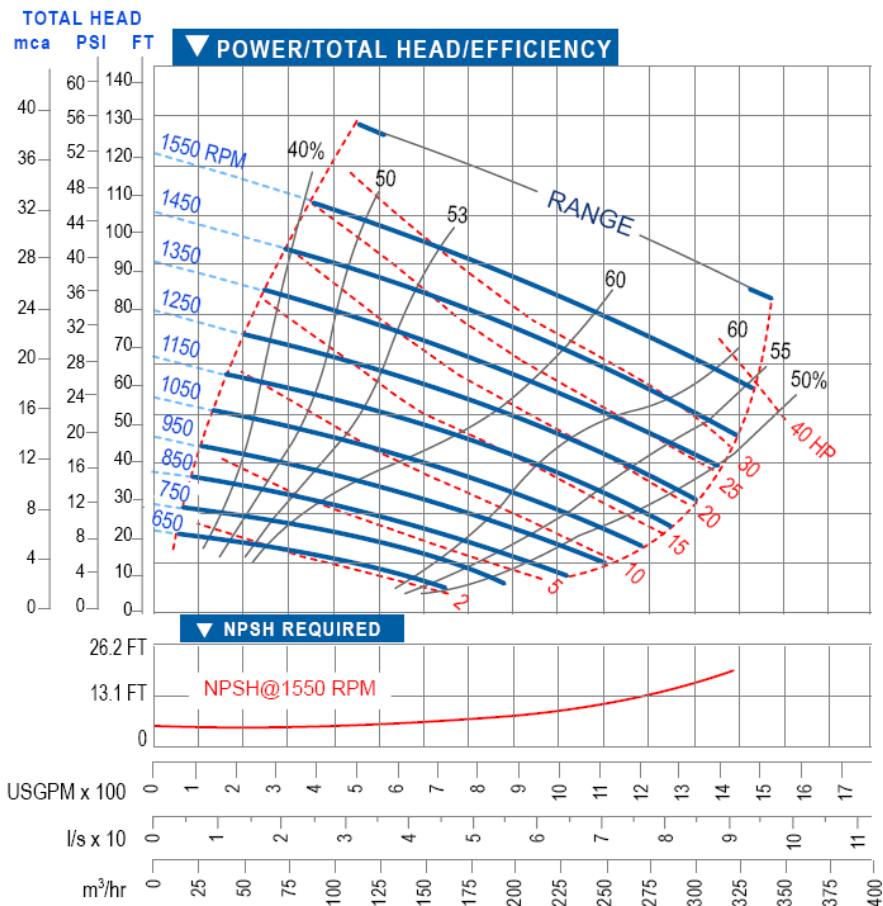
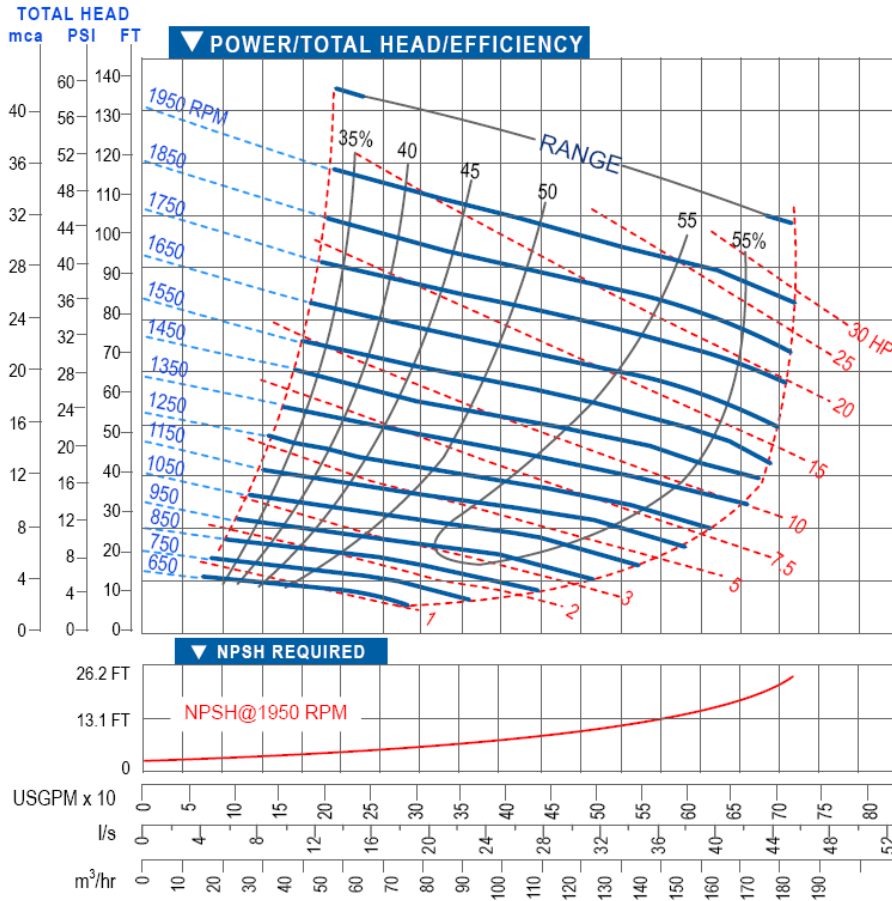


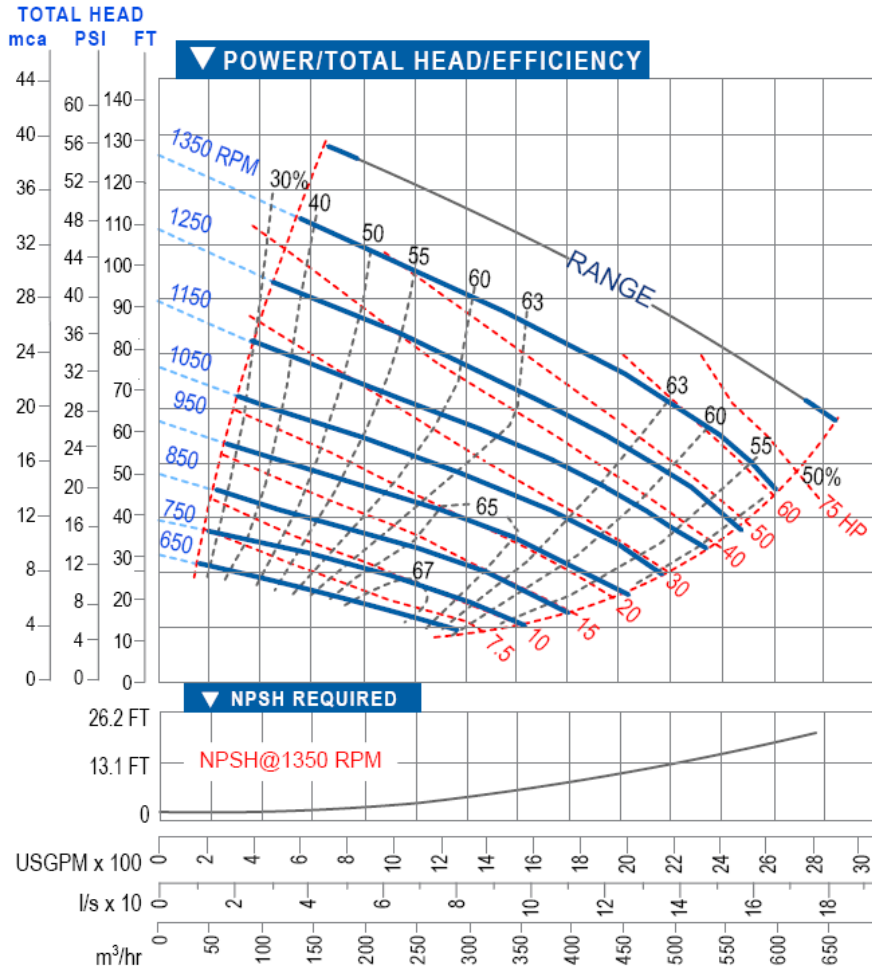
## HL-3

Impeller Dia.  
222.25mm  
(8.3/4")

Max. Solids  
64mm (2.1/2")

R.P.M  
650 - 2150



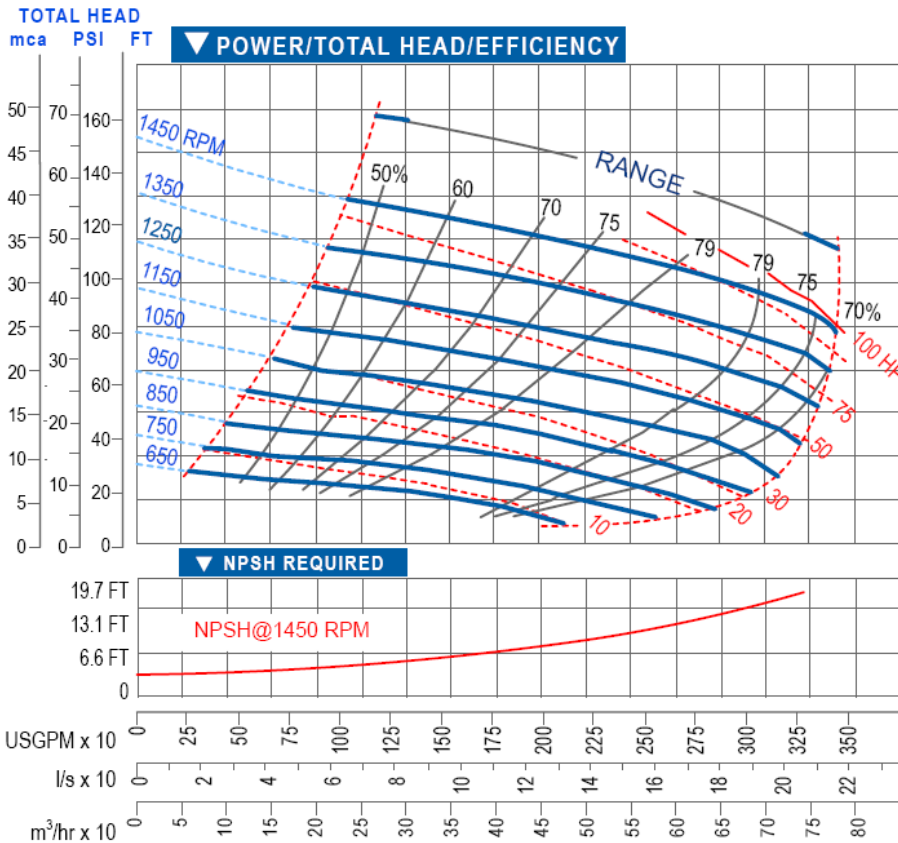


## HL-8

Impeller Dia.  
374.65mm (14.¾")

Max. Solids  
76mm (3")

R.P.M  
650 - 1350

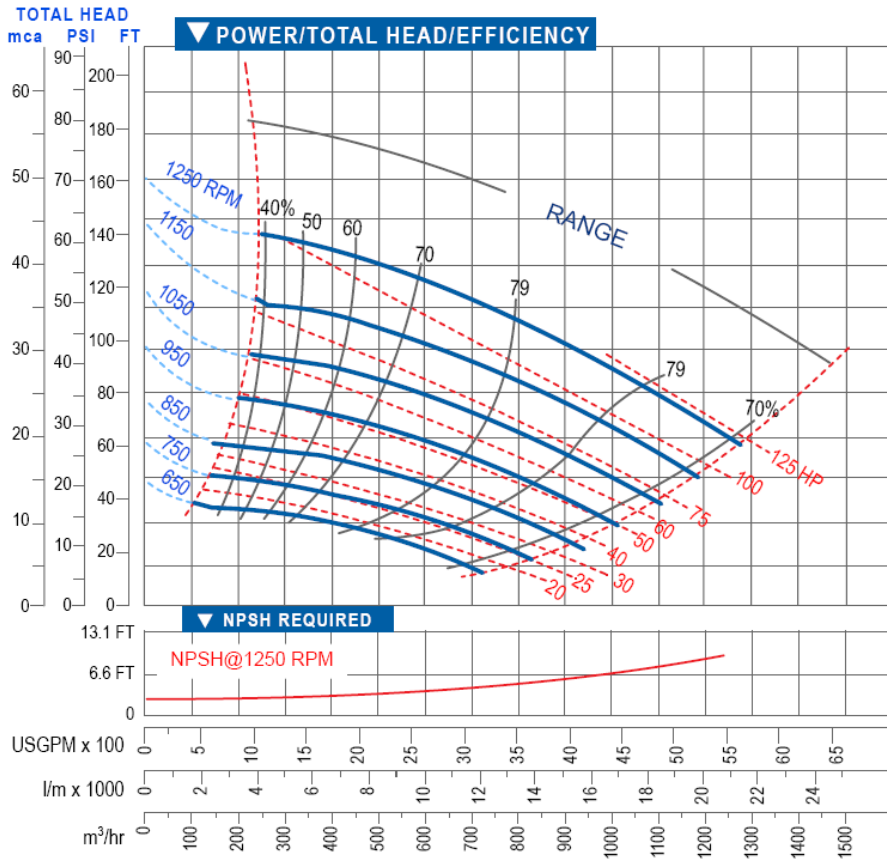


## HL-10

Impeller Dia.  
374.65mm (14.¾")

Max. Solids  
76mm (3")

R.P.M  
650 - 1450



# HL-12

Impeller Dia.  
457.2mm (18")

Max. Solids  
76mm (3")

R.P.M  
650 - 2150